

JOHN ORMOND HOUSE

899 SILBURY BOULEVARD | **CENTRAL MILTON KEYNES** | MK9 3XL



A Prominent Headquarters Office Building
in the Heart of Central Milton Keynes



Flexible suites from 5,114 - 10,734 sq ft

Flexible office suites designed to support productive and collaborative working environments in one of the UK's most successful business locations.



Space. Style. Specification.

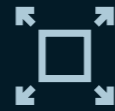
Modern office accommodation within a landmark Central Milton Keynes headquarters building.



Landmark HQ building



Double height atrium reception



Flexible suites from 5,026 - 10,587 sq ft



Excellent natural light throughout



Glazed partitioned offices and meeting rooms



Kitchen and breakout areas



Air conditioning



LED lighting



Raised floors



Passenger lifts



WCs on each floor



Views across Campbell Park



John Ormond House is a purpose-built headquarters office building prominently located on Silbury Boulevard in Central Milton Keynes.

The available suites are situated on the second and third floors, offering flexible office space with a mix of open-plan areas, meeting rooms and fitted accommodation. Full-height glazing provides excellent natural light and views across Campbell Park.

The building benefits from proactive on-site ownership and management, ensuring a high standard of maintenance and responsive occupier support.



Contemporary Offices. Flexible Space.

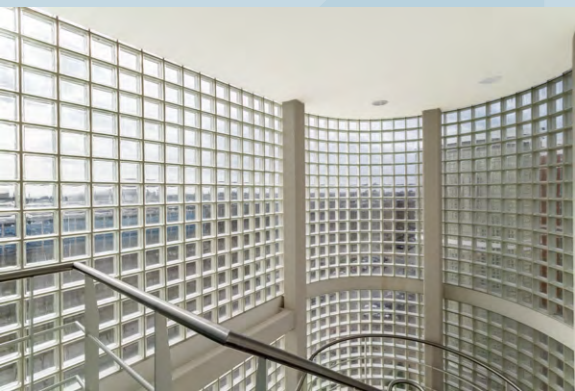
John Ormond House offers modern, flexible office accommodation within a prominent headquarters building in Central Milton Keynes.

The **second and third floor suites** provide a mix of open-plan workspace, glazed meeting rooms and kitchen/breakout areas. The third floor includes partitioned executive offices.

Both suites feature **air conditioning, LED lighting and raised floors**, together with full-height glazing providing excellent natural light.

Upper floors enjoy far-reaching views across Campbell Park and the Central Milton Keynes skyline — **some of the best office views in the city.**

The building also benefits from an impressive **double-height atrium reception**, creating a strong arrival experience for occupiers and visitors.



Accommodation

Area	Size (sq ft)	Size (sq m)
Second Floor	5,620	522.1
Third Floor	5,114	475.1
Total NIA	10,734	997.2

Net Internal Area

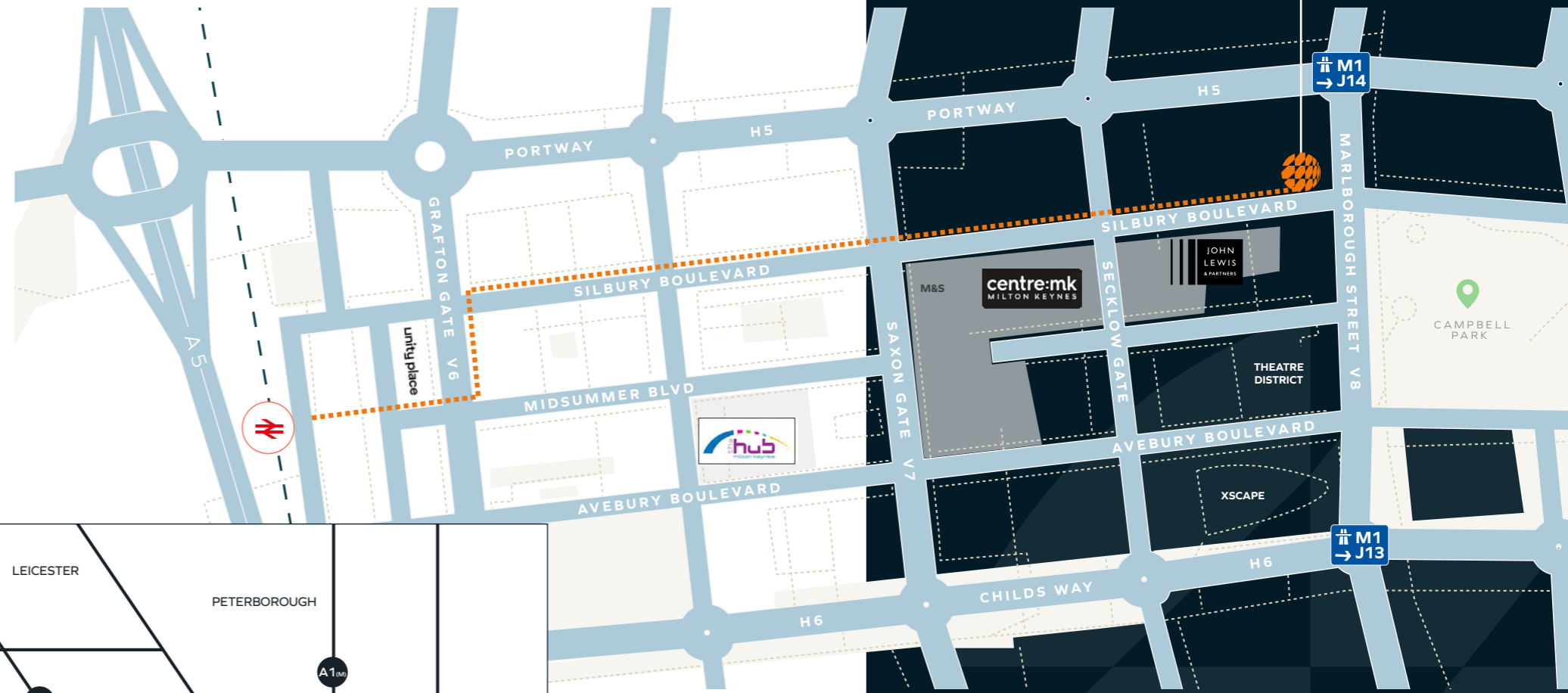
The property has been measured in accordance with the RICS Code of Measuring Practice 6th Edition.

In the Heart of Milton Keynes. Connected to Everywhere.

John Ormond House occupies a highly prominent position on Silbury Boulevard in Central Milton Keynes, close to CBX, The Hub and the city's principal retail and leisure amenities.

Milton Keynes is one of the UK's fastest growing cities and a key commercial centre within the Oxford-Cambridge Arc.

The property benefits from excellent transport connectivity, with fast access to the national motorway network and regular rail services to London.



RAIL

London Euston	34 mins
Birmingham New Street	53 mins
Manchester Piccadilly	98 mins

Source: National Rail Enquiries

ROAD

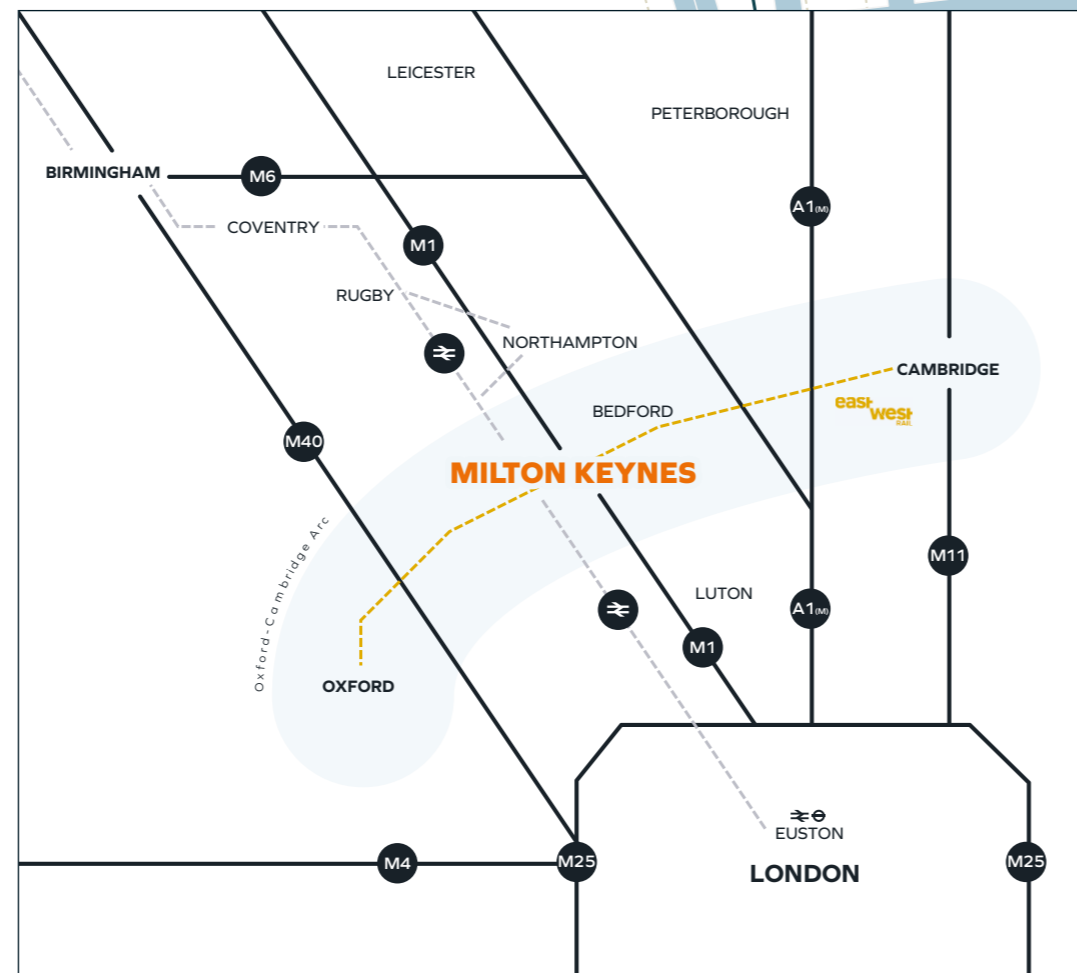
M1 Junction 14	5 mins
M25 Junction 21	35 mins
Central London	50 mins
Oxford	60 mins
Cambridge	60 mins
Central Birmingham	70 mins

Source: Google Maps

AIRPORTS

London Luton	36 mins
Birmingham International	70 mins
London Stansted	75 mins
London Heathrow	90 mins
London Gatwick	120 mins

Source: Google Maps



East West Rail will create a new strategic rail corridor linking Oxford, Milton Keynes and Cambridge, significantly reducing journey times and strengthening connectivity across the Oxford-Cambridge growth corridor. Phase One between Oxford and Milton Keynes is scheduled to open in 2025, with the full route to Cambridge expected by 2030.



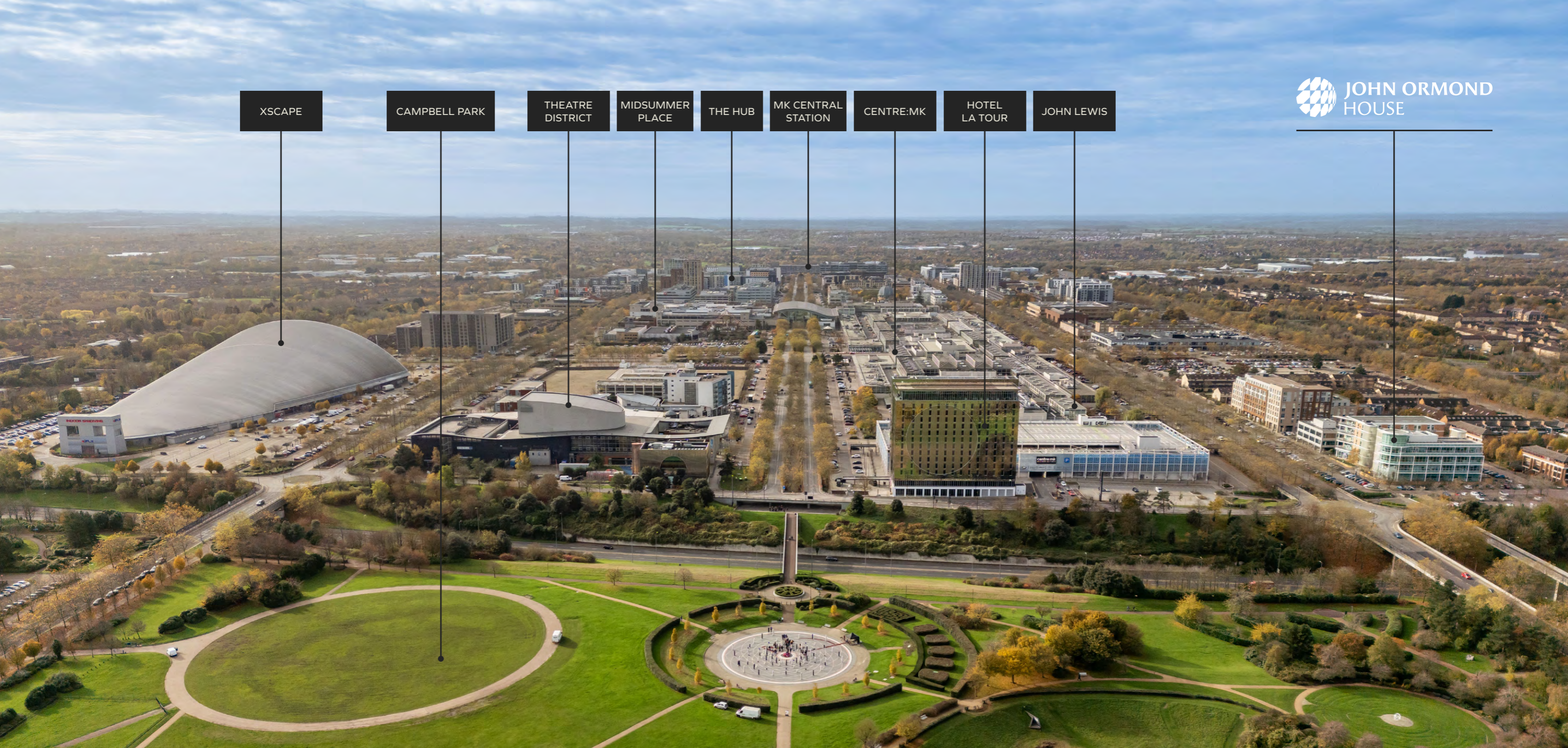
CYCLING ROUTES

Milton Keynes is a cycle-friendly city with an extensive network of redways and leisure routes. Lime bikes and e-scooters are readily available across the city, making local journeys quick and convenient.



WALKING ROUTE TO MK CENTRAL

Milton Keynes Central is a 30 minute stroll from John Ormond House.



XSCAPE

CAMPBELL PARK

THEATRE DISTRICT

MIDSUMMER PLACE

THE HUB

MK CENTRAL STATION

CENTRE:MK

HOTEL LA TOUR

JOHN LEWIS

Panoramic Views Across Central Milton Keynes

John Ormond House occupies a prominent position in Central Milton Keynes, close to the city's commercial, retail and leisure amenities including centre:mk and The Hub.

Views across Campbell Park and the wider Central Milton Keynes skyline.





Designed to Perform. Positioned for Business.

SERVICES

The building benefits from a range of modern office services including:

- Air conditioning
- Passenger lifts
- Raised floors
- LED lighting
- Kitchen and breakout facilities
- Male and female WCs
- Double height reception atrium

TERMS

Available by way of an effective FRI lease for a term to be agreed.

Rent on application.

No VAT payable.

BUSINESS RATES

Interested parties should make their own enquiries with the local authority.





**JOHN ORMOND
HOUSE**

Viewing

For further information or to arrange a viewing please contact the sole agent:



NICK BOSWORTH

M: 07721 128 798

DDI: 01908 558 746

E: nick.bosworth@eddisons.com

TATE JAMES

M: 07810 746 885

DDI: 01908 046 863

E: tate.james@eddisons.com

WWW.EDDISONS.COM

15 Shenley Pavilions, Shenley Wood, Milton Keynes MK5 6LB
